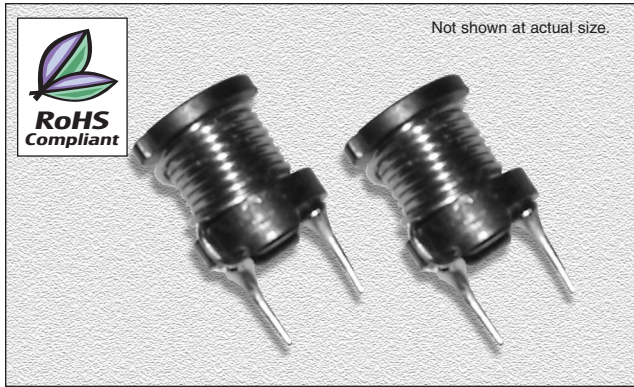


CTCH895F Series

From 10 μH to 47,000 μH

SPECIFICATIONS

Parts numbers indicate available inductance tolerance.
K = $\pm 10\%$, M = $\pm 20\%$



CHARACTERISTICS

Description: Radial leaded fixed inductor

Applications: Ideal for use as a power choke in switching power supply, TV sets, video appliances, and industrial equipment as well as use as a peaking coil in filtering applications

Inductance Tolerance: $\pm 10\%$, $\pm 20\%$

Testing: Tested on a HP4285A or HP4284A at specified frequency

Packaging: Bulk packaging

Rated Current: The rated D.C. current indicates the value of current when the inductance is 10% lower than its initial value at D.C. superposition or D.C. current when at $\Delta t = 40^\circ\text{C}$ whichever is lower. ($T_a = 20^\circ\text{C}$)

Miscellaneous: RoHS Compliant

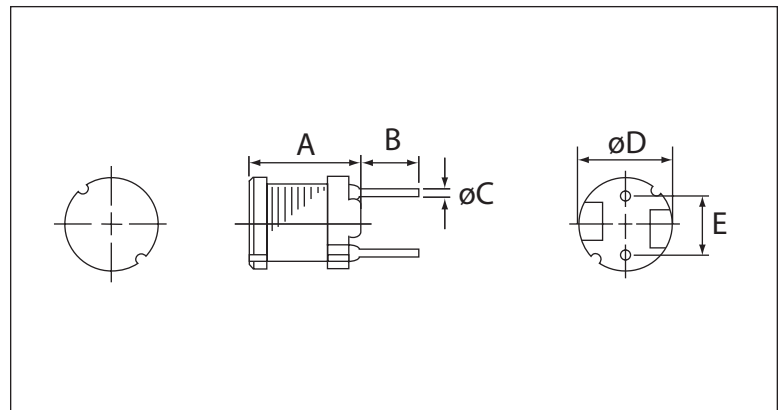
Additional Information: Additional electrical & physical information available upon request

Samples available. See website for ordering information.

| Part Number | Inductance (μH) | Test Freq. (Hz) | DCR Max. (Ω) | Rated DC (A) |
|---------------|------------------------------|-----------------|-----------------------|--------------|
| CTCH895F-100M | 10 | 2.52M | 0.04 | 2.60 |
| CTCH895F-120M | 12 | 2.52M | 0.04 | 2.60 |
| CTCH895F-150K | 15 | 2.52M | 0.05 | 2.10 |
| CTCH895F-180K | 18 | 2.52M | 0.05 | 2.00 |
| CTCH895F-220K | 22 | 2.52M | 0.06 | 1.70 |
| CTCH895F-270K | 27 | 2.52M | 0.06 | 1.60 |
| CTCH895F-330K | 33 | 2.52M | 0.07 | 1.40 |
| CTCH895F-390K | 39 | 2.52M | 0.08 | 1.40 |
| CTCH895F-470K | 47 | 2.52M | 0.10 | 1.30 |
| CTCH895F-560K | 56 | 2.52M | 0.11 | 1.20 |
| CTCH895F-680K | 68 | 2.52M | 0.14 | 1.10 |
| CTCH895F-820K | 82 | 2.52M | 0.16 | 1.00 |
| CTCH895F-101K | 100 | 1.00k | 0.19 | 0.90 |
| CTCH895F-121K | 120 | 1.00k | 0.22 | 0.82 |
| CTCH895F-151K | 150 | 1.00k | 0.27 | 0.74 |
| CTCH895F-181K | 180 | 1.00k | 0.31 | 0.71 |
| CTCH895F-221K | 220 | 1.00k | 0.38 | 0.64 |
| CTCH895F-271K | 270 | 1.00k | 0.53 | 0.57 |
| CTCH895F-331K | 330 | 1.00k | 0.61 | 0.51 |
| CTCH895F-391K | 390 | 1.00k | 0.69 | 0.48 |
| CTCH895F-471K | 470 | 1.00k | 0.89 | 0.43 |
| CTCH895F-561K | 560 | 1.00k | 1.01 | 0.40 |
| CTCH895F-681K | 680 | 1.00k | 1.18 | 0.35 |
| CTCH895F-821K | 820 | 1.00k | 1.57 | 0.32 |
| CTCH895F-102K | 1000 | 1.00k | 1.84 | 0.30 |
| CTCH895F-122K | 1200 | 1.00k | 2.10 | 0.27 |
| CTCH895F-152K | 1500 | 1.00k | 2.80 | 0.23 |
| CTCH895F-182K | 1800 | 1.00k | 3.21 | 0.21 |
| CTCH895F-222K | 2200 | 1.00k | 4.21 | 0.19 |
| CTCH895F-272K | 2700 | 1.00k | 4.94 | 0.17 |
| CTCH895F-332K | 3300 | 1.00k | 6.16 | 0.15 |
| CTCH895F-392K | 3900 | 1.00k | 6.84 | 0.14 |
| CTCH895F-472K | 4700 | 1.00k | 7.89 | 0.13 |
| CTCH895F-562K | 5600 | 1.00k | 11.50 | 0.12 |
| CTCH895F-682K | 6800 | 1.00k | 13.20 | 0.11 |
| CTCH895F-822K | 8200 | 1.00k | 15.20 | 0.10 |
| CTCH895F-103K | 10000 | 1.00k | 22.00 | 0.089 |
| CTCH895F-123K | 12000 | 1.00k | 25.00 | 0.073 |
| CTCH895F-153K | 15000 | 1.00k | 29.10 | 0.068 |
| CTCH895F-183K | 18000 | 1.00k | 38.90 | 0.066 |
| CTCH895F-223K | 22000 | 1.00k | 44.90 | 0.059 |
| CTCH895F-273K | 27000 | 1.00k | 55.70 | 0.052 |
| CTCH895F-333K | 33000 | 1.00k | 64.20 | 0.048 |
| CTCH895F-393K | 39000 | 1.00k | 74.20 | 0.042 |
| CTCH895F-473K | 47000 | 1.00k | 96.40 | 0.038 |

PHYSICAL DIMENSIONS

| Size | A Max. | B | C | D | E |
|--------|--------|-----------------|--------------------|-----------------|------------------|
| mm | 9.5 | 5.0 \pm 1.0 | 0.7+0.1,-0.05 | 7.8 \pm 0.5 | 5.0 \pm 0.3 |
| inches | 0.37 | 0.20 \pm 0.04 | 0.027+0.004,-0.002 | 0.30 \pm 0.02 | 0.20 \pm 0.012 |



12.07.06